



Beaufort County
Public Works
Stormwater Infrastructure
Project Summary

Project Summary: Sanders/ St Helena Island Post Office Channel

Activity: Routine/Preventive Maintenance

Narrative Description of Project:

Project improved 9 L.F. of drainage system. Installed (1) catch basin, 9 L.F. of channel pipe, rip rap and handseeded for erosion control.

Completion: May-14

2014-629 / Sanders/ St Helena Island Post Office	Labor Hours	Labor Cost	Equipment Cost	Material Cost	Contractor Cost	Indirect Labor	Total Cost
AUDIT / Audit Project	0.5	\$10.23	\$0.00	\$0.00	\$0.00	\$6.62	\$16.85
CBINS / Catch basin - installed	32.0	\$729.84	\$177.20	\$359.06	\$0.00	\$459.12	\$1,725.22
HAUL / Hauling	10.0	\$216.30	\$107.00	\$269.54	\$0.00	\$144.20	\$737.04
ONJV / Onsite Job Visit	8.0	\$238.72	\$28.96	\$6.00	\$0.00	\$145.84	\$419.52
PP / Project Preparation	2.0	\$88.54	\$7.24	\$9.00	\$0.00	\$67.92	\$172.70
SC / Sediment Control	40.0	\$923.76	\$137.44	\$54.19	\$0.00	\$592.56	\$1,707.95
2014-629 / Sanders/ St Helena Island Post Office	92.5	\$2,207.39	\$457.84	\$697.78	\$0.00	\$1,416.26	\$4,779.27
Sub Total							
Grand Total	92.5	\$2,207.39	\$457.84	\$697.78	\$0.00	\$1,416.26	\$4,779.27

Before

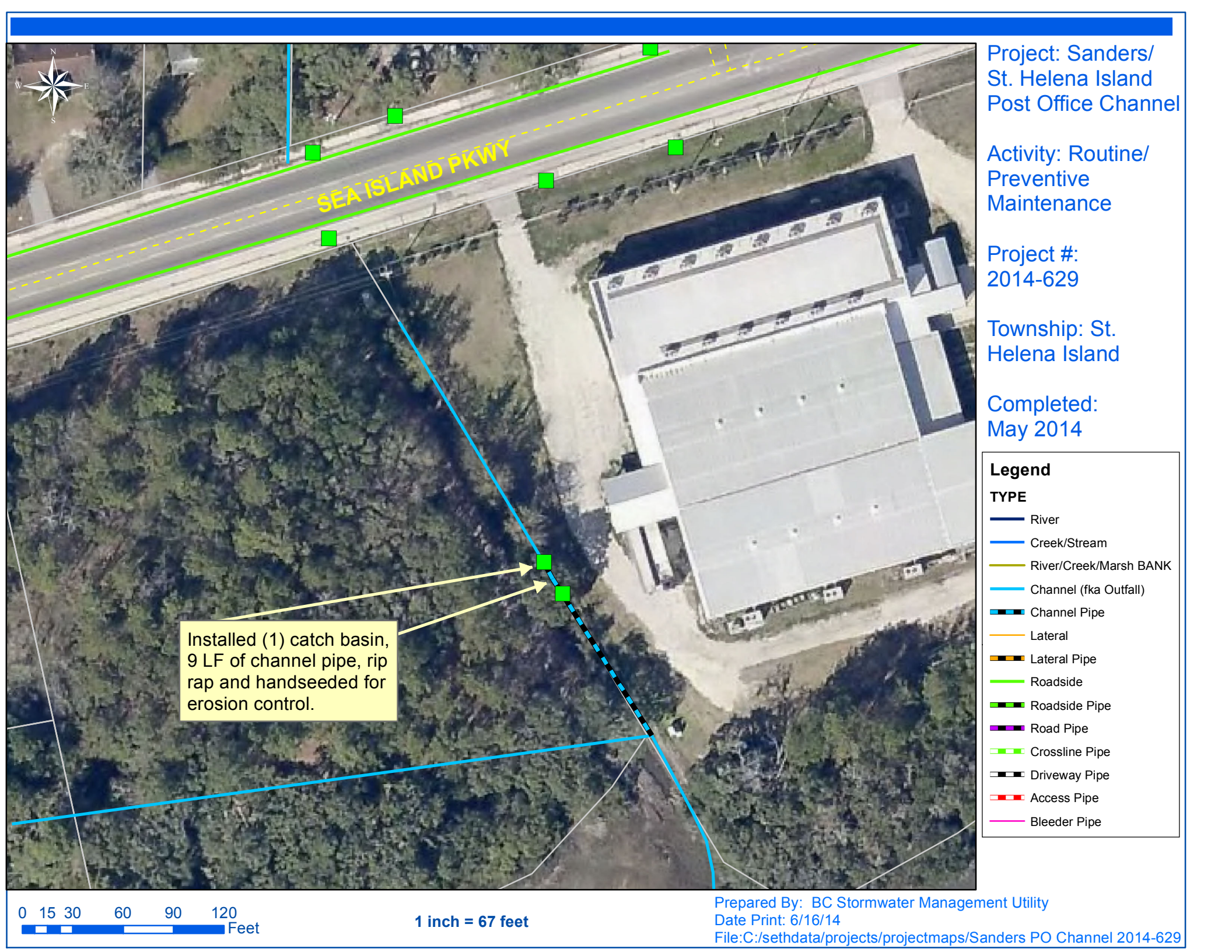


During



After





Project: Sanders/
St. Helena Island
Post Office Channel

Activity: Routine/
Preventive
Maintenance

Project #:
2014-629

Township: St.
Helena Island

Completed:
May 2014

Legend

TYPE

River

Creek/Stream

River/Creek/Marsh BANK

Channel (fka Outfall)

Channel Pipe

Lateral

Lateral Pipe

Roadside

Roadside Pipe

Road Pipe

Crossline Pipe

Driveway Pipe

Access Pipe

Bleeder Pipe

Installed (1) catch basin,
9 LF of channel pipe, rip
rap and handseeded for
erosion control.

0 15 30 60 90 120
Feet

1 inch = 67 feet